

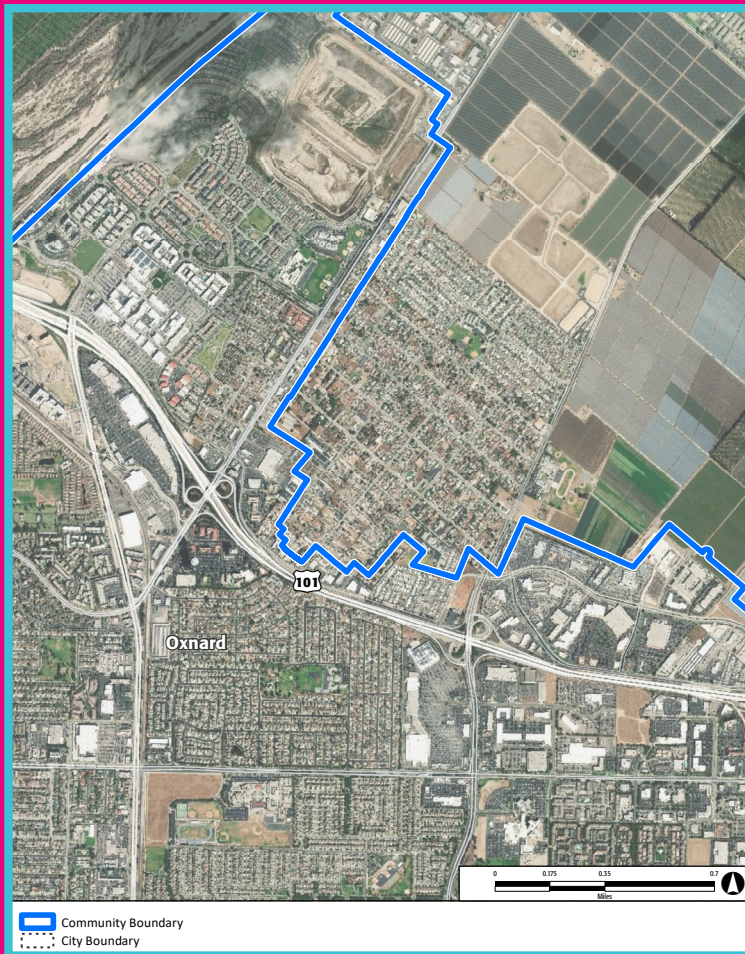


# Oxnard Community

DAC Communities Addressed: El Rio Community

03.14.2020

WATERSHEDS COALITION OF VENTURA COUNTY  
INTEGRATED REGIONAL WATER MANAGEMENT REGION



Funded by California Department of Water Resources and Prop 1

It's our water.



# TOOLKIT

## TABLE OF CONTENTS



**WATER**  
talks

### PROJECT BACKGROUND

What is WaterTalks?

IRWM Regions- How do we plan for water in California?

Project Overview- How is WaterTalks funded?

Funding- What sources of funding are available for water-related projects?

### WATER IN OUR ENVIRONMENT

Surface Water and Groundwater- Where does my rainwater go?  
How do contaminants get into our water?

Watershed- What is a watershed?

Groundwater- Where does my groundwater come from?

Flooding- Am I at risk of flooding? (optional)

Access to Parks and Local Waterways- How clean are our lakes, streams, rivers, and beaches?  
Where can I find parks and local waterways?

Existing Land Use- How does land use affect our water?

Climate Change - How does the changing climate affect our community?

Capturing and Storing Water- How can we catch and store rainwater?

### OUR TAP WATER

Water Sources- Where does my tap water come from?

Water Consumption- How much water does one person drink?  
How much water do we use at home?

Tap Water Quality- How clean is my drinking water?

Water Service Providers- Who is my water service provider?

### GLOSSARY OF TERMS & ACRONYMS

#### TEMPLATES:

- Event Flyer Template
- PowerPoint Presentation Template
- Agenda Template
- Sign-In Sheet Template
- Take-Away Flyer Template
- Comment Cards

**[Additional resources available online at watertalks.csusb.edu](http://watertalks.csusb.edu)**

Prepared by:

Water Resources & Policy Initiatives, California State University & PlaceWorks

in collaboration with:

TreePeople and the Council for Watershed Health



# WHAT IS WATERTALKS?

**WaterTalks** is a public program designed to generate and increase community involvement in planning a sustainable water future for California. Its goal is to explore the strengths and opportunities of 128 communities in Los Angeles and Ventura counties facing ongoing economic and environmental distress, and to gather input to prioritize and recommend water-related projects based on issues of greatest concern.

WaterTalks will be implemented in three phases. The first phase of WaterTalks outreach events are designed to educate and engage communities in the Los Angeles and Ventura counties facing ongoing economic and environmental distress, empowering them to engage in water planning including subsequent phases of WaterTalks.

**WaterTalks** aims to ensure that regional water resource management considers the health, safety, welfare, and resiliency of lower-income community members. To do so, WaterTalks is providing a series of community events for the benefit of local residents to do the following: (1) raise questions and concerns about their water-related issues, (2) provide crucial input regarding their community's water needs, possible solutions, and (3) to learn about the State's most current water related topics. These include drinking water, water conservation, flood management, drainage, vector control, access to parks and recreation, and the overall health of our watersheds.

Participation in a WaterTalks Community events will help ensure communities' needs, concerns, questions, and insights become part of the State's future water projects. A schedule of meeting dates and locations is available on the WaterTalks website:

<https://watertalks.csusb.edu>

## Clean Water



*Clean water is essential to our hydration, food production and sanitation needs.*

## Drainage & Vector Concerns



*Management of drainage water is important to reduce water related vector-borne diseases.*

## Green Walkable Neighborhoods & Safe Routes to School



*Water is an essential ingredient for shaded, walkable, and healthy streets.*

## Flood Protection



*Flood protection strategies are vital to preventing flooding catastrophes in our counties, cities and neighborhoods.*

## Health & Well-Being

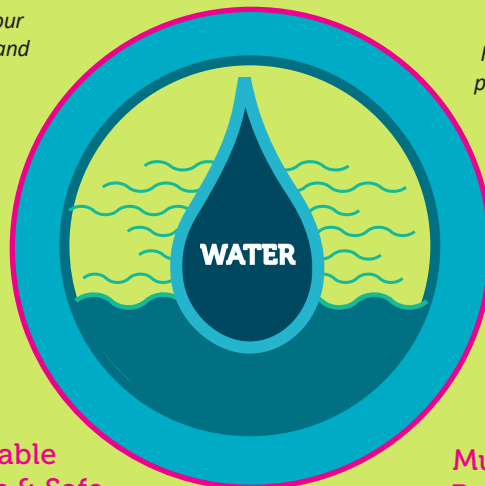


*Educate people about their water quality to ensure healthy living.*

## Multi-Objective Parks, Recreation, & Habitats



*Access to natural resources (i.e. creeks, streams, rivers etc.) and open space directly contributes to public and environmental health.*

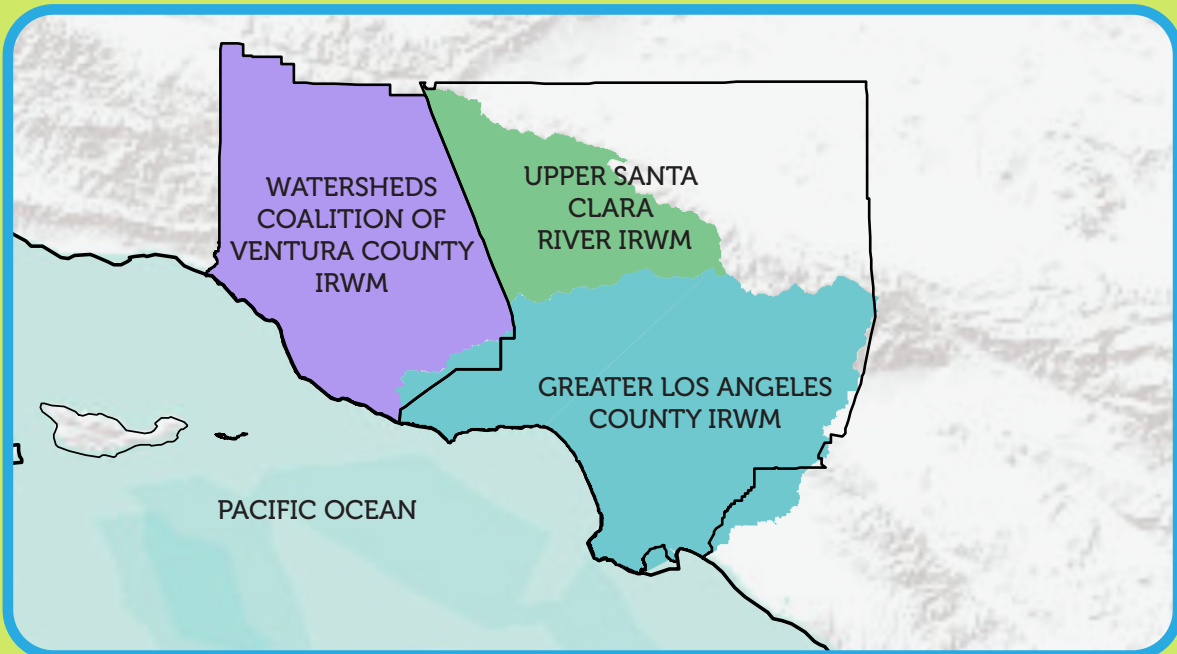


# IRWM REGIONS

## HOW DO WE PLAN FOR WATER IN CALIFORNIA?

The Integrated Regional Water Management Planning Act (SB 1672, 2002) has provided over \$1.5 billion in State funding dedicated to support and advance integrated, multi-benefit regional projects. WaterTalks supports California's collaborative effort, Integrated Regional Water Management (IRWM), in three of Southern California's planning areas.

- Greater Los Angeles County (GLAC)
- Upper Santa Clara River (USCR)
- Watersheds Coalition of Ventura County (WCVC)



***Integrated Regional Water Management (IRWM) is a collaborative effort to identify and implement water management solutions on a regional scale that increase regional self-reliance, reduce conflict, and manage water to concurrently achieve social, environmental, and economic objectives.***

*- California Department of Water Resources*



**IRWM meetings are open to the public! To learn more visit:**

**GLAC IRWM Region:** <https://dpw.lacounty.gov/wmd/irwmp/>

**USCR IRWM Region:** <https://dpw.lacounty.gov/wmd/scr/>

**WCVC IRWM Region:** <http://wcvc.ventura.org/>

# PROJECT OVERVIEW

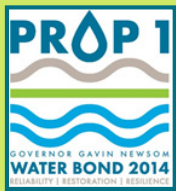
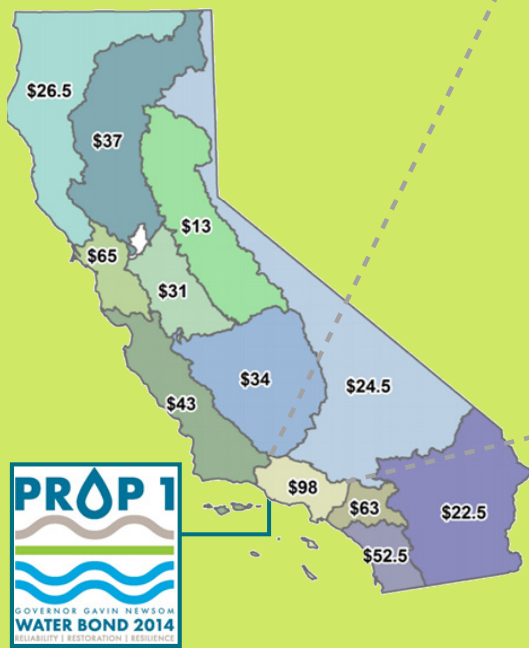
**WaterTalks** is funded through the California Department of Water Resources. In 2014, voters approved “The Water Quality, Supply, and Infrastructure Improvement Act” – Proposition 1 – to meet the State’s long-term water needs. Proposition 1 funds an array of sustainable water-related projects, including drinking water protection, public water system improvements, water recycling, wastewater treatment, drought relief, emergency water supply management, and watershed protection. The Los Angeles-Ventura Funding Area received \$98 million in Proposition 1 funding, ten-percent (\$9.8M) of which is dedicated to planning and outreach in underserved communities.

**WaterTalks** is being implemented in three regions in the Los Angeles-Ventura Funding Area. TreePeople, along with the Council for Watershed Health, is engaging communities in activities for the Greater Los Angeles County (GLAC) Region. The California State University’s Water Resources and Policies Initiative (WRPI) is involving communities for the Watersheds Coalition of Ventura County (WVSC) and Upper Santa Clara River (USCR) regions. The two teams collaborate with numerous community based organizations to host local WaterTalks community events.

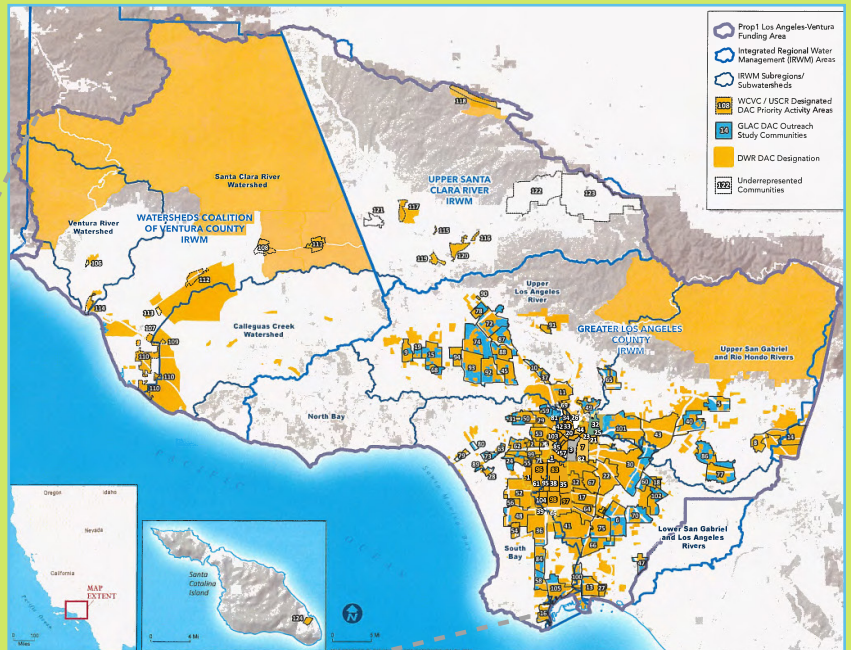
## Proposition 1 Funding Areas

	Central Coast		Sacramento
	Colorado River		San Diego
	Lahonton		San Francisco
	Los Angeles		San Joaquin River
	Mountain Counties		Santa Ana
	North Coast		Tulare Lake

## Funding allocations in millions



**PROP 1**  
LOS ANGELES-VENTURA  
FUNDING AREA



## Where can I learn more?

Proposition 1: California’s Integrated Regional Water Management, and the Disadvantaged Communities Involvement Program (DACIP), see the following websites:

- <https://water.ca.gov/Work-With-Us/Grants-And-Loans/IRWM-Grant-Programs/Proposition-1>
- <https://water.ca.gov/Work-With-Us/Grants-And-Loans/IRWM-Grant-Programs/Proposition-1/DAC-Involvement-Program>

# FUNDING

## WHAT SOURCES OF FUNDING ARE AVAILABLE FOR WATER-RELATED PROJECTS?

In addition to funding from the Regional Water Management Planning Act, Prop 1 is another primary potential funding source to support water-related multi-benefit projects throughout our community. Multi-benefit projects address two or more of the following:

- water quality
- stormwater management
- flood management
- restored and enhanced ecosystems
- reliable surface and groundwater supplies

Other potential funding sources for water and green infrastructure projects are listed below.

### **Proposition 1** Water Quality, Supply & Infrastructure Improvement Act

**Year:** 2014

**Funding Available:** \$7.545 billion in bonds in California, including \$98 million in the LA-Ventura Funding Area.

**What can be funded:** Water-related projects including surface and groundwater storage, water recycling, and stormwater projects.

## Other Potential Funding Sources for Water and Green Infrastructure Projects

- **Proposition 68 | Parks, Environment, and Water Bond (June 2018)**  
For more information visit: [https://www.parks.ca.gov/?page\\_id=29906](https://www.parks.ca.gov/?page_id=29906)
- **California Department of Forestry and Fire Protection 2019/2020 - California Climate Investments Urban and Community Forestry Program**  
For more information visit: <https://www.fire.ca.gov/grants/urban-and-community-forestry-grant-programs/>
- **California Natural Resources Agency | Urban Greening Grant Program**  
For more information visit: <http://resources.ca.gov/grants/urban-greening/>
- **Federal Green Infrastructure Funding Sources**  
For more information visit: <https://www.epa.gov/green-infrastructure/green-infrastructure-funding-opportunities>



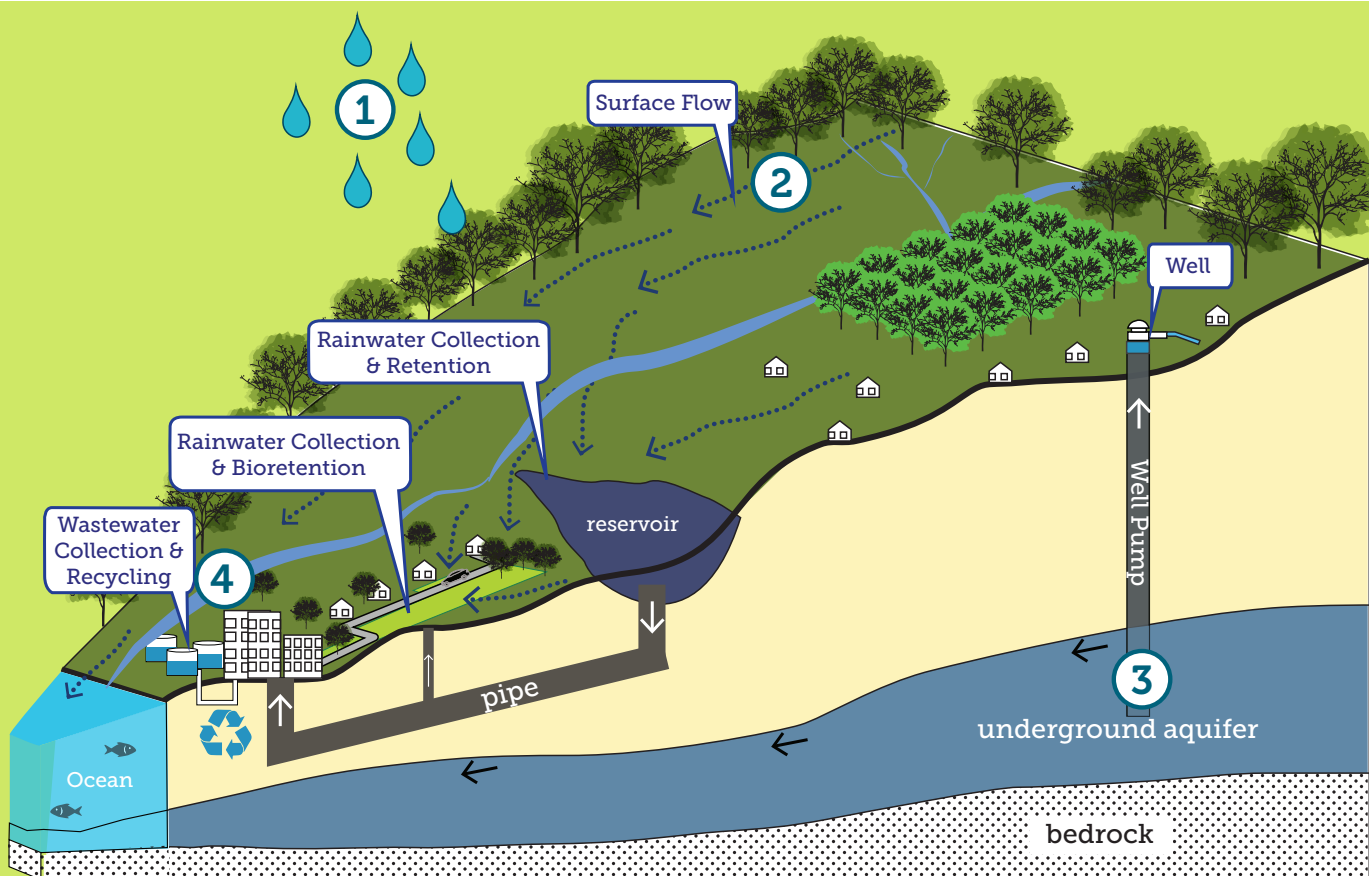
**For additional funding resources please visit:**  
<https://www.fundingresource.org/>

# SURFACE WATER AND GROUNDWATER

WHERE DOES MY RAINWATER GO?

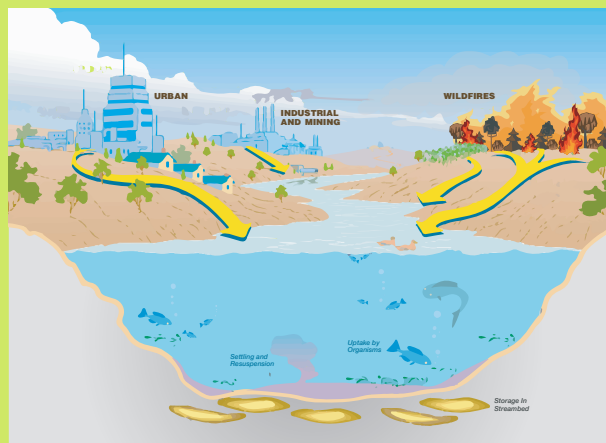
Rainwater, surface water and groundwater systems are integrally connected.

- ① Rain falls to the earth and collects on the surface or underground.
- ② Surface water flows into rivers, streams and reservoirs.
- ③ Groundwater is stored in underground reservoirs known as “aquifers” and can be recharged with precipitation runoff or connection to surface water.
- ④ In Ventura County, municipal wastewater is also treated and re-used.



HOW DO CONTAMINANTS GET INTO OUR WATER?

Trash, bacteria from pet waste and aging septic tanks, pesticides and herbicides, dust from brake pads on cars, oil and grease, and many other pollutants impact our local streams, rivers, beaches, and groundwater aquifers.



# WATERSHED

## WHAT IS A WATERSHED?

A watershed is a land area that channels rainfall and snowmelt into creeks, streams, and rivers that flow into a common outlet such as a reservoir, bay, or the ocean. For example, the watershed of the Ventura River would be the surrounding neighborhoods and natural terrain.

Ventura County has three major watersheds: Calleguas Creek, Santa Clara River, and Ventura River Watersheds. El Rio is located within the Santa Clara River Watershed.



Source: USGS, 2018; Ventura County, 2015

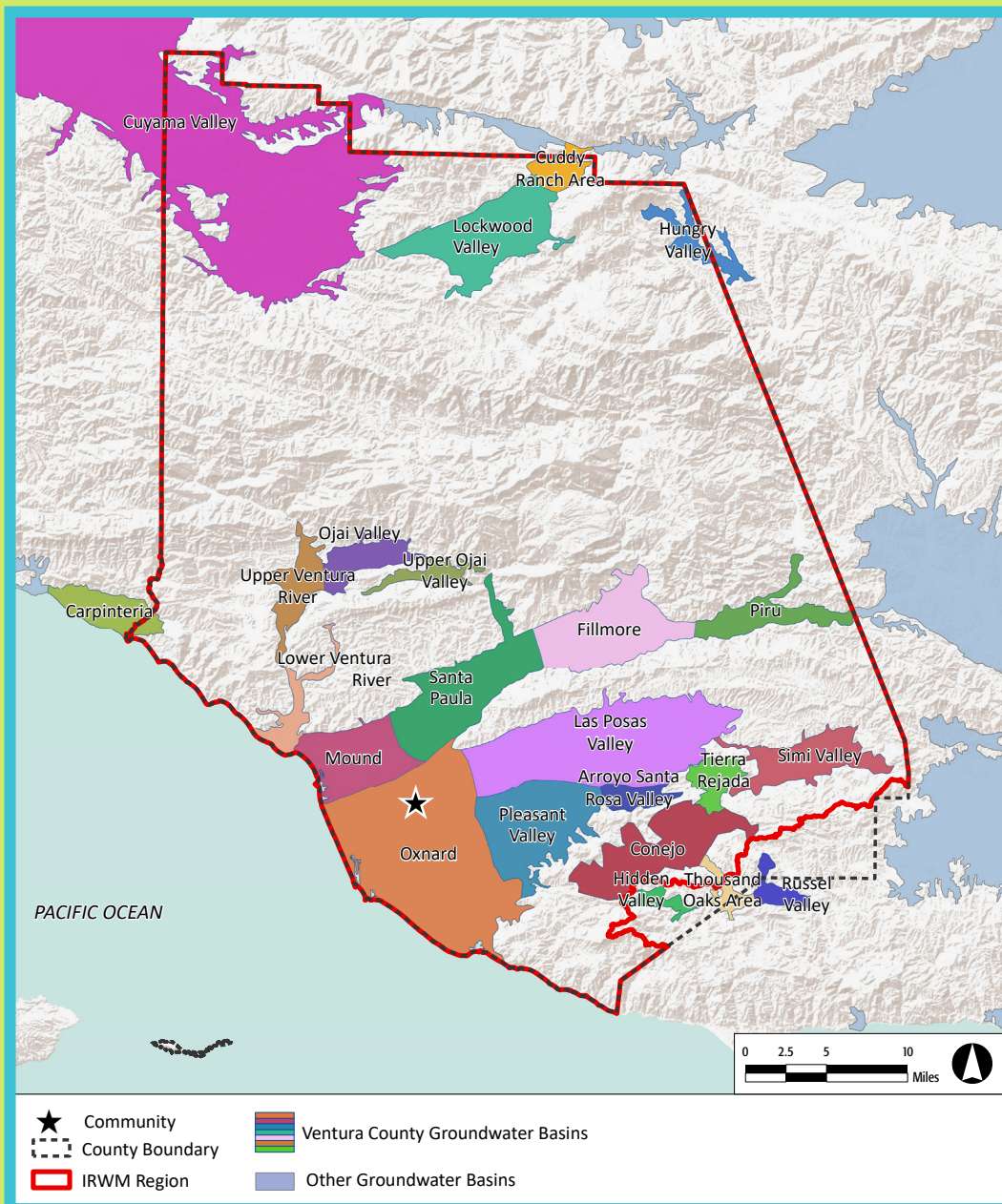


# GROUNDWATER

## WHERE DOES MY GROUNDWATER COME FROM?

A groundwater basin is an aquifer or system of aquifers that stores water beneath the surface. Groundwater is the largest source of water for the region, and is regularly pumped by individual well owners for agricultural uses, as well as municipal water providers. Our community overlies the Oxnard Groundwater Basin, which is a sub-basin of the Santa Clara Groundwater Basin.

Clay soils or heavily compacted soils, as well as impermeable surfaces, may prevent surface water from infiltrating and reaching groundwater aquifers.



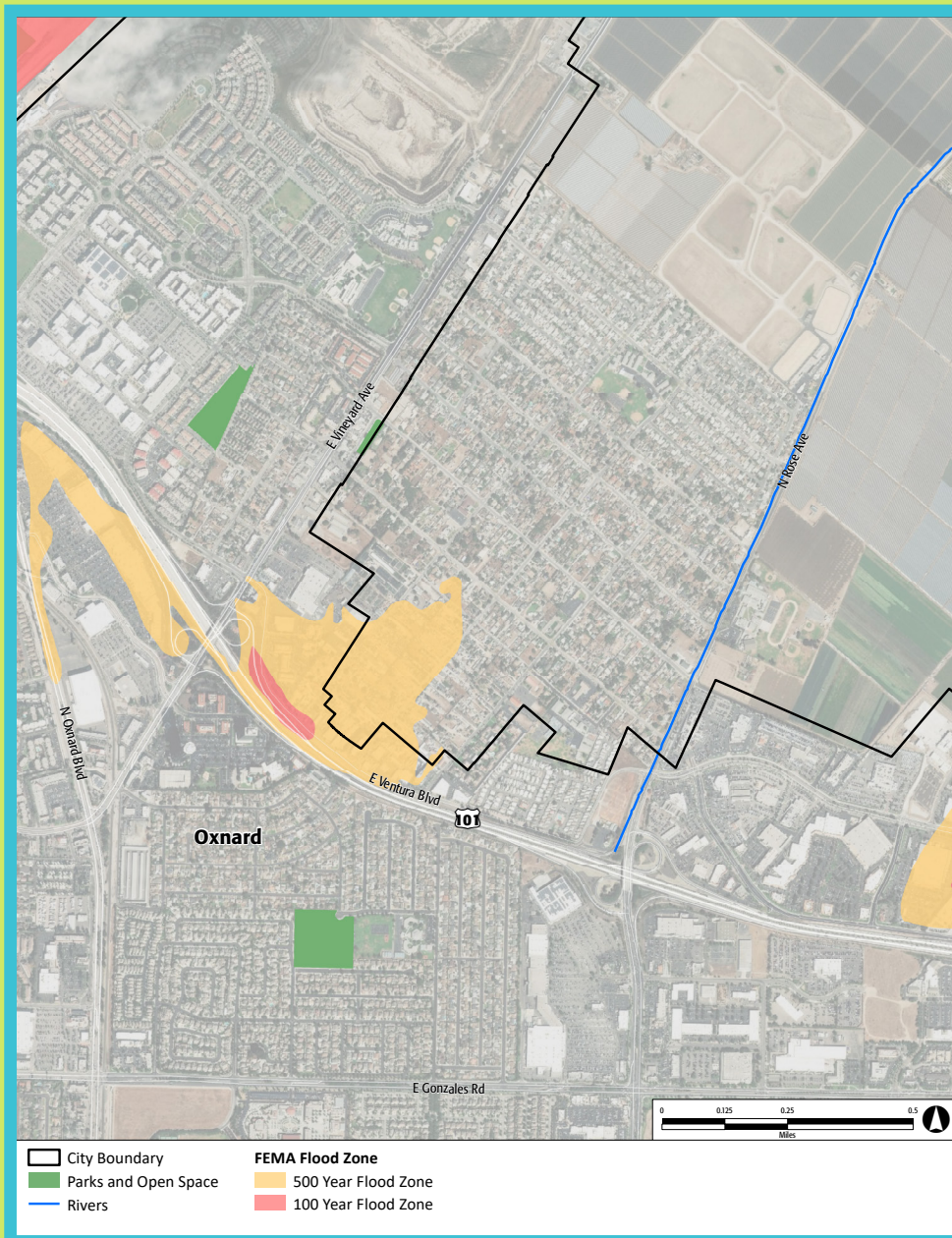
Source: California Natural Resource Agency, 2019; USGS, 2013

# FLOODING

AM I AT RISK OF FLOODING ?

The Federal Emergency Management Agency (FEMA) defines flood zones as areas with a 1% annual chance of flooding, also known as Special Flood Hazard Areas. FEMA maps are based on historic flooding, and do not account for changes in climate that may increase potential for flooding.

More localized flooding may occur within and beyond FEMA flood zones, and can negatively impact communities. The VCWPD is responsible for watershed health planning, flood protection, and stormwater management within the unincorporated areas of the County.



Source: GreenInfo Network 2019; USGS, 2018; FEMA, 2018

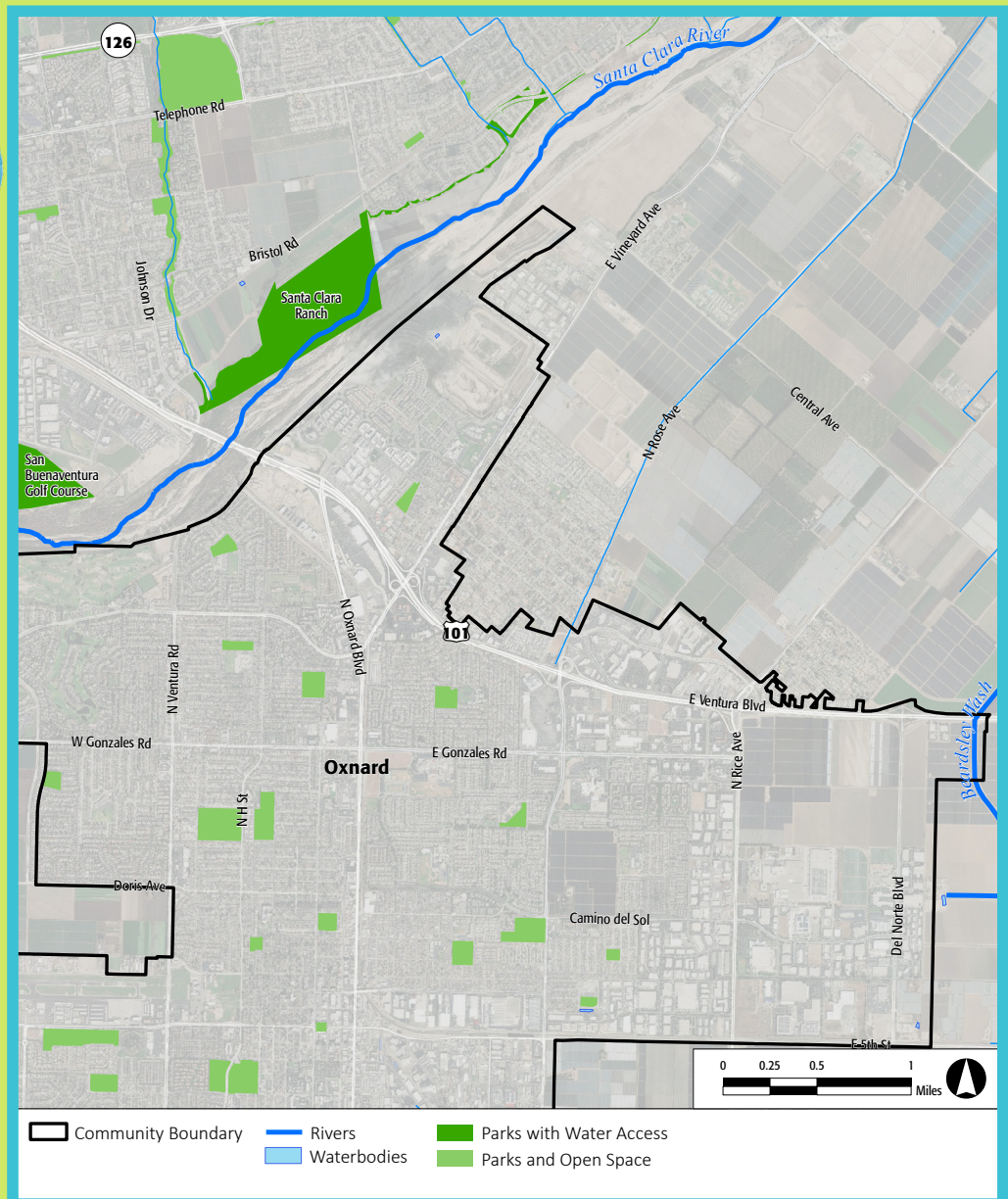
# ACCESS TO PARKS AND LOCAL WATERWAYS

HOW CLEAN ARE OUR LAKES, STREAMS, RIVERS, AND BEACHES?

Water bodies and the habitats and open space they support can provide places for recreation and respite, contributing to quality of life in our communities. Thousands of visitors swim, wade, kayak, and fish at dozens of freshwater sites located across our region. However, certain contaminants can pose a health risk to those that recreate in and eat fish from our local streams and rivers. Visit the site below to learn more about your water quality.

- California Water Quality Monitoring Council (<https://mywaterquality.ca.gov/index.html>)

WHERE CAN I FIND PARKS AND LOCAL WATERWAYS?



Source: PlaceWorks, 2019; USGS, 2018; CPAD, 2019; Ventura County, 2019

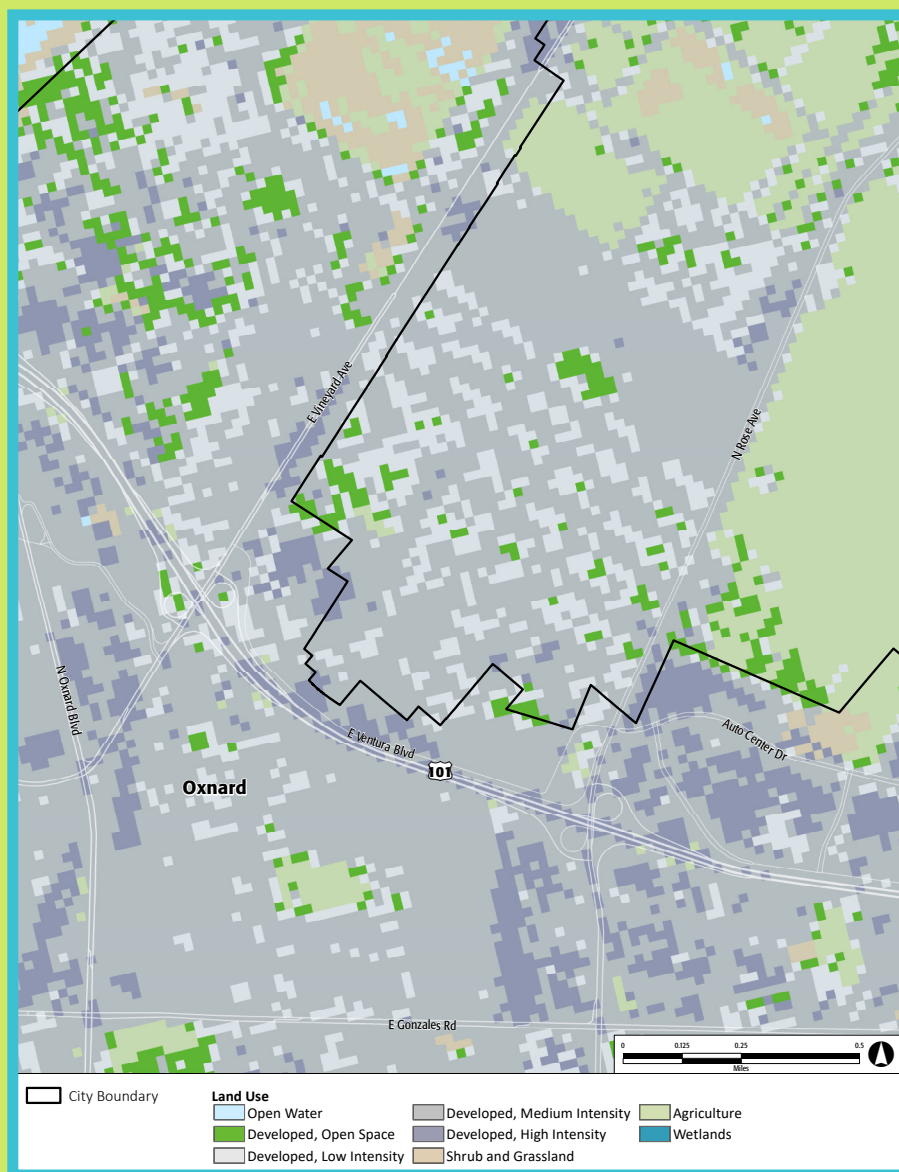
# EXISTING LAND USE

## HOW DOES LAND USE AFFECT OUR WATER?

Land use directly affects how water moves through communities. Land use in urban communities ranges from open space and agriculture to varying levels of development.

Developed land often consists of impervious surfaces, such as asphalt and concrete. When land is paved, water is not able to soak into the ground. Water that flows over the hardened landscape is channeled into the storm drain system and directed into rivers and oceans.

Too much water flowing across the hardened landscape can result in flooding and/or erosion downstream. This untreated water is called urban runoff. Urban runoff, carrying pollutants such as automotive fluids, trash and pesticides, is the biggest source of pollution in our rivers and ocean.



Source: NLCD, 2016; ESRI, 2018

# CLIMATE CHANGE

## HOW DOES THE CHANGING CLIMATE AFFECT OUR COMMUNITY?

Recent climate models predict sea level rise, hotter temperatures, and shifts in overall precipitation patterns in coming years. These changes can affect water supply and increase the likelihood of natural disasters.

Rising sea levels will affect coastal development and require funding to protect critical infrastructure, such as coastal highways. Sea level rise can also increase coastal erosion and flooding.

Total precipitation may not significantly change; however it is predicted to fall on fewer days, resulting in more intense storm events and greater potential for flash flooding and landslides. These changes will likely limit the amount of water that reaches underwater aquifers while increasing flows into municipal storm drains. Water demand for irrigation and wildfire protection is also likely to increase as temperatures rise and less regular rain increases drought conditions.

## Sea Level Rise Projections\*

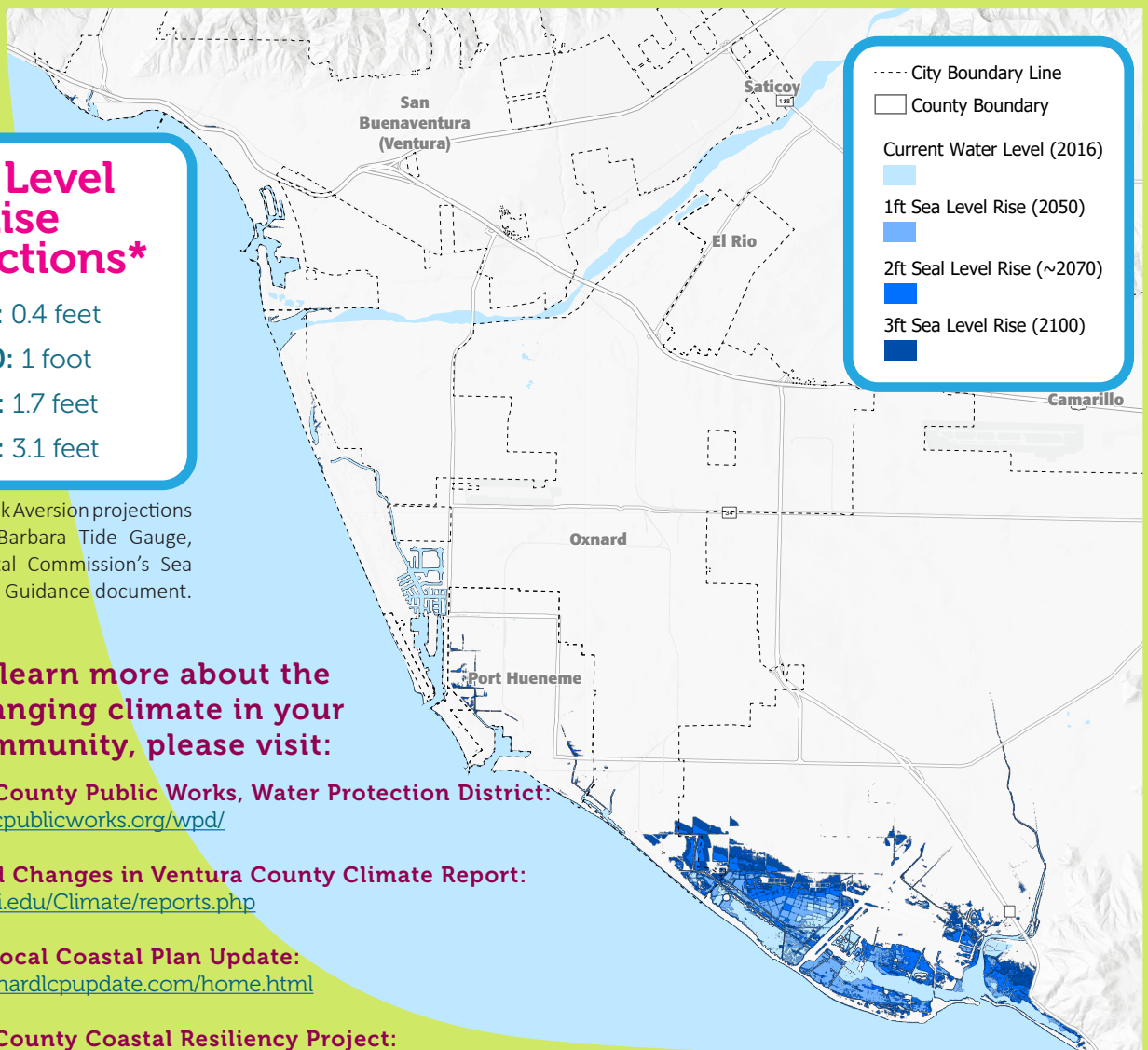
- 2030: 0.4 feet
- 2050: 1 foot
- 2070: 1.7 feet
- 2100: 3.1 feet

\*Source: Low Risk Aversion projections for the Santa Barbara Tide Gauge, California Coastal Commission's Sea Level Rise Policy Guidance document.



To learn more about the changing climate in your community, please visit:

- **Ventura County Public Works, Water Protection District:**  
<https://www.vcpdw.org/wpd/>
- **Projected Changes in Ventura County Climate Report:**  
<https://wrcc.dri.edu/Climate/reports.php>
- **Oxnard Local Coastal Plan Update:**  
<http://www.oxnardlcpupdate.com/home.html>
- **Ventura County Coastal Resiliency Project:**  
<https://www.vcrma.org/vc-resilient-coastal-adaptation-project>



# CAPTURING, CONSERVING, AND STORING WATER

## HOW CAN WE CATCH AND STORE RAINWATER?

It is crucial to our water supply that we treat and clean contaminated runoff, or urban runoff, by incorporating green infrastructure practices into our built environment. Potential green infrastructure strategies that catch, store, and treat urban runoff include constructing, rain gardens, bioswales, and bio-retention ponds; protecting open space; removing hardscape; and redirecting rainwater that falls on rooftops and parking lots into large tanks (cisterns) where it can be stored for later use.

These various methods function to keep our waterways and ocean clean, and help replenish our groundwater supply and reduce our dependence on imported water. Additionally, sustainable landscaping and irrigation practices can reduce and treat urban runoff while also conserving water.

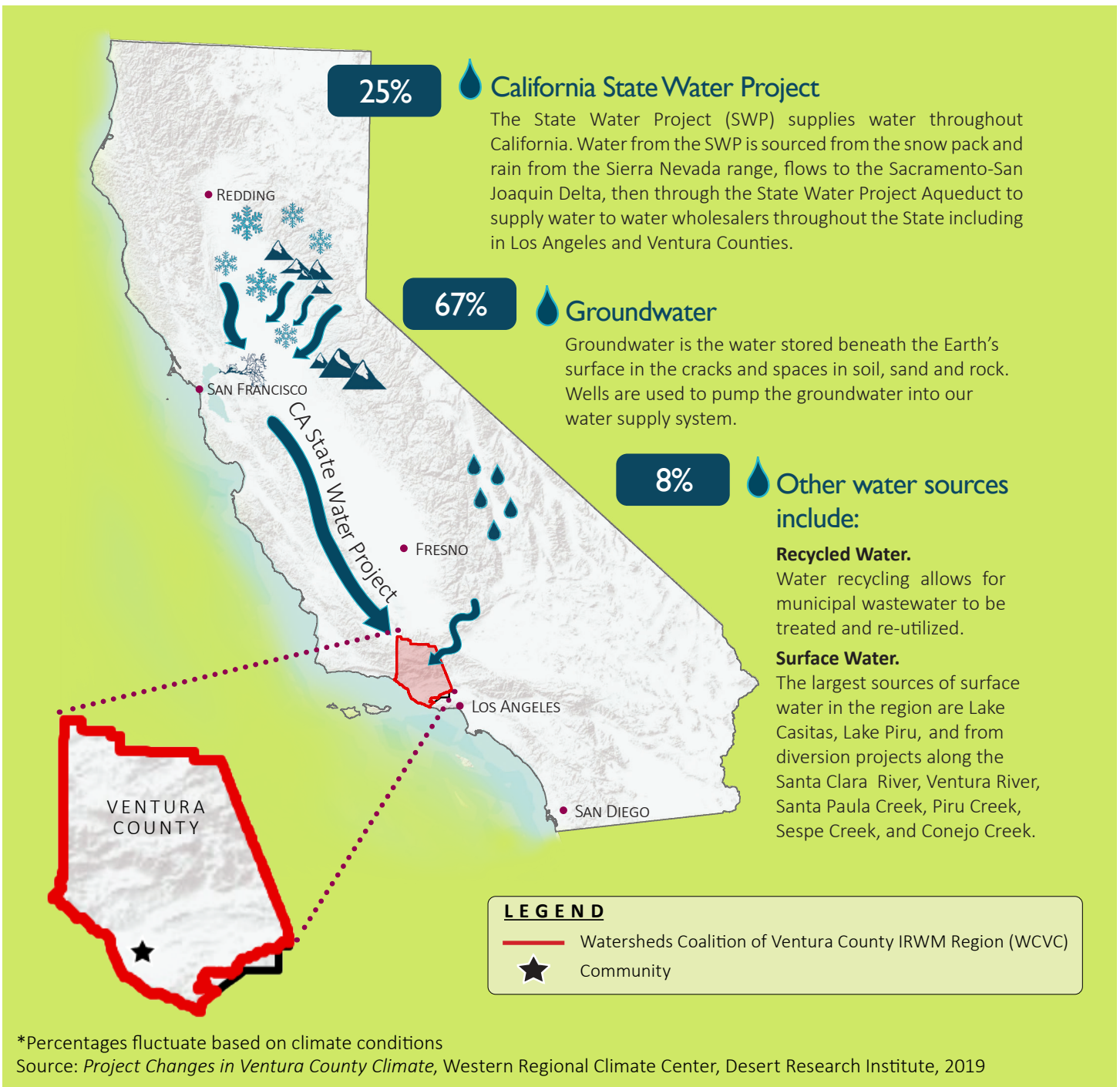


For more information on landscaping water conservation, please visit: <http://venturacountygardening.com/>

# WATER SOURCES

WHERE DOES MY TAP WATER COME FROM?

- The water supply in Ventura County comes from three main sources: groundwater, the State Water Project, and other local surface water.
- 67% of the water sources is groundwater, which is pumped by individual well owners and by public and private water purveyors within Ventura County.
- The source of tap (or drinking) water in our community is a blend of imported State Water and local groundwater treated to meet state and federal drinking water quality standards.



# WATER CONSUMPTION

HOW MUCH DOES ONE PERSON DRINK?



8 Cups per day

=

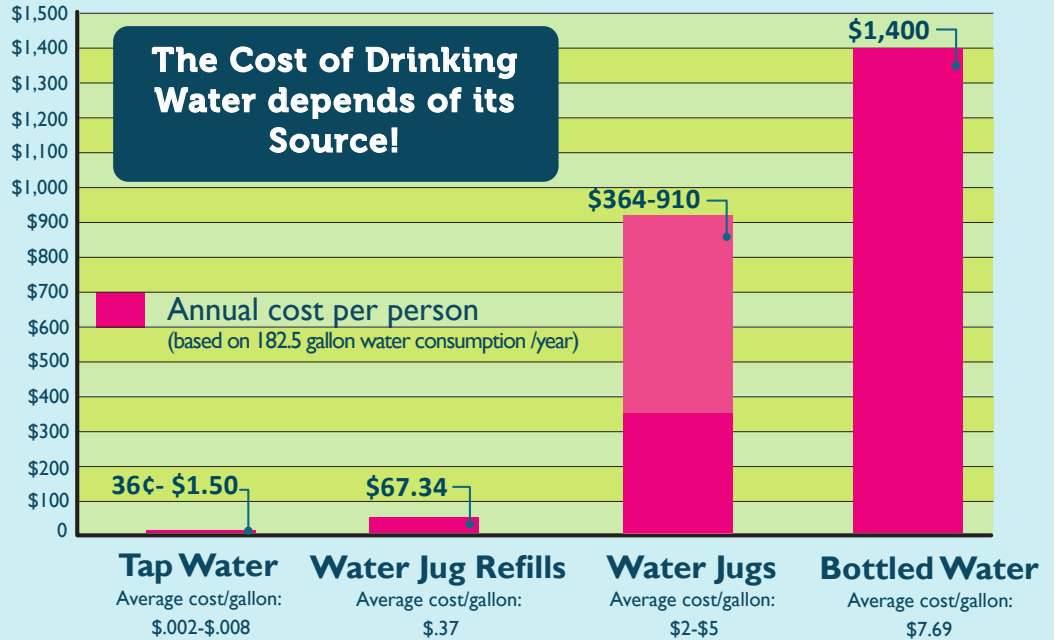


1/2 gallon per day

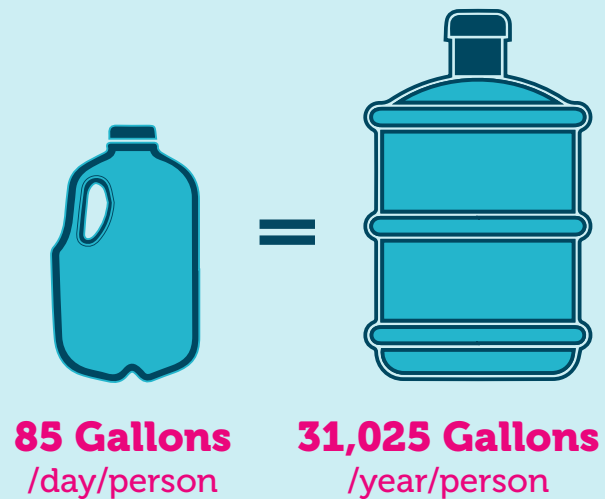
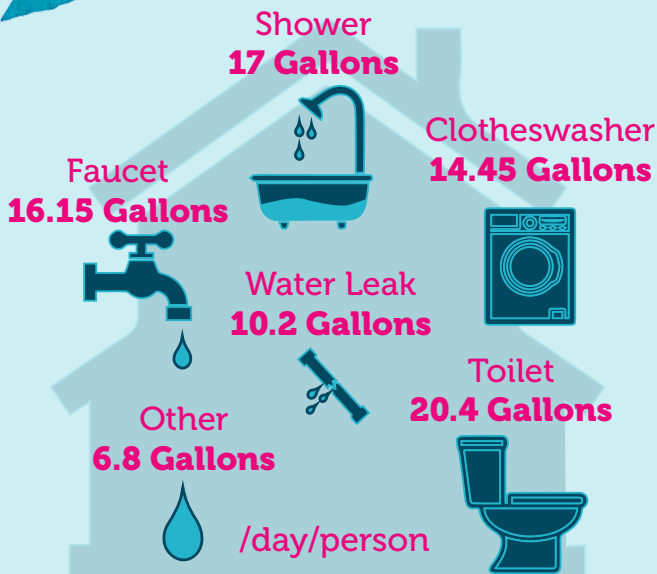
=



182.5 gallons per year



HOW MUCH WATER DO WE USE AT HOME?



Sources:

1. Water cost estimates are based on water provider data and information from local retailers collected by CSU WaterTalks team in 2019. Actual costs may vary.
2. Residential water uses based on the following resources:
  - a. How We Use Water." EPA, Environmental Protection Agency, 5 Feb. 2018, [www.epa.gov/watersense/how-we-use-water](http://www.epa.gov/watersense/how-we-use-water).
  - b. Residential Water Use Trends and Implications for Conservation Policy." Legislative Analyst's Office, 8 Mar. 2017, <https://lao.ca.gov/Publications/Report/3611>.



# TAP WATER QUALITY

## HOW CLEAN IS MY DRINKING WATER?

Water quality testing ensures that our drinking water is safe and meets federal and state drinking water standards. The US Environmental Protection Agency establishes federal standards that determine the maximum concentration allowable for specific contaminants in tap water. In California, the State Water Resources Control Board (SWRCB) Division of Drinking Water is responsible for regulating drinking water. While tests are important for identifying potential health issues, the presence of some contaminants does not necessarily indicate the water is unsafe to drink for all populations.

## How do contaminants get into my tap water?

Contaminants can wash into rivers and streams, or seep into groundwater. Common sources of contamination include: naturally occurring chemicals and minerals, agriculture and land use practices, industry, and urban runoff. Water service providers are responsible for ensuring that the water they provide meets State and federal requirements for maximum contaminant levels.

## How often is my water tested and reported?

The State Water Resources Control Board Division of Drinking Water (DDW) requires community water systems to publish and make available an annual Consumer Confidence Report. Water agencies collect water samples from designated sampling points or wells for regular testing.

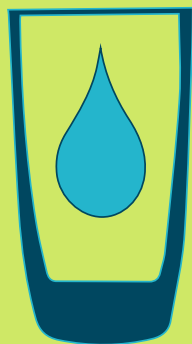
## What is my water tested for?

The EPA has set maximum contaminant levels (MCLs) for more than 90 contaminants, and maintains a list of unregulated contaminants that may require thresholds in the future. Regulated contaminants include:

- Microorganisms such as viruses, bacteria.
- Inorganic chemicals such as lead, arsenic, nitrate, copper, and chromium.
- Radiological contaminants from natural radioactivity or human activity such as uranium and radon.
- Pesticides such as 1,2-Dibromo-3-chloropropane (DBCP), 1,2-Dibromoethane (EDB), and 1,2-dichloropropane.

## What is an exceedance? What happens when there is an exceedance?

An exceedance occurs when the concentration of a contaminant is above the established safe threshold and could potentially cause a threat to human health. When this occurs, agencies are responsible for sending an unsafe water notice to all customers and instructions on how to proceed when using tap water.



## Are property owners responsible for water quality?

Water service providers are responsible for providing safe water to water meters, and property owners/landlords are responsible for maintaining water infrastructure from the meter to tap. In some cases, domestic water quality issues result from infrastructure that is the responsibility of the owner/landlord to maintain.



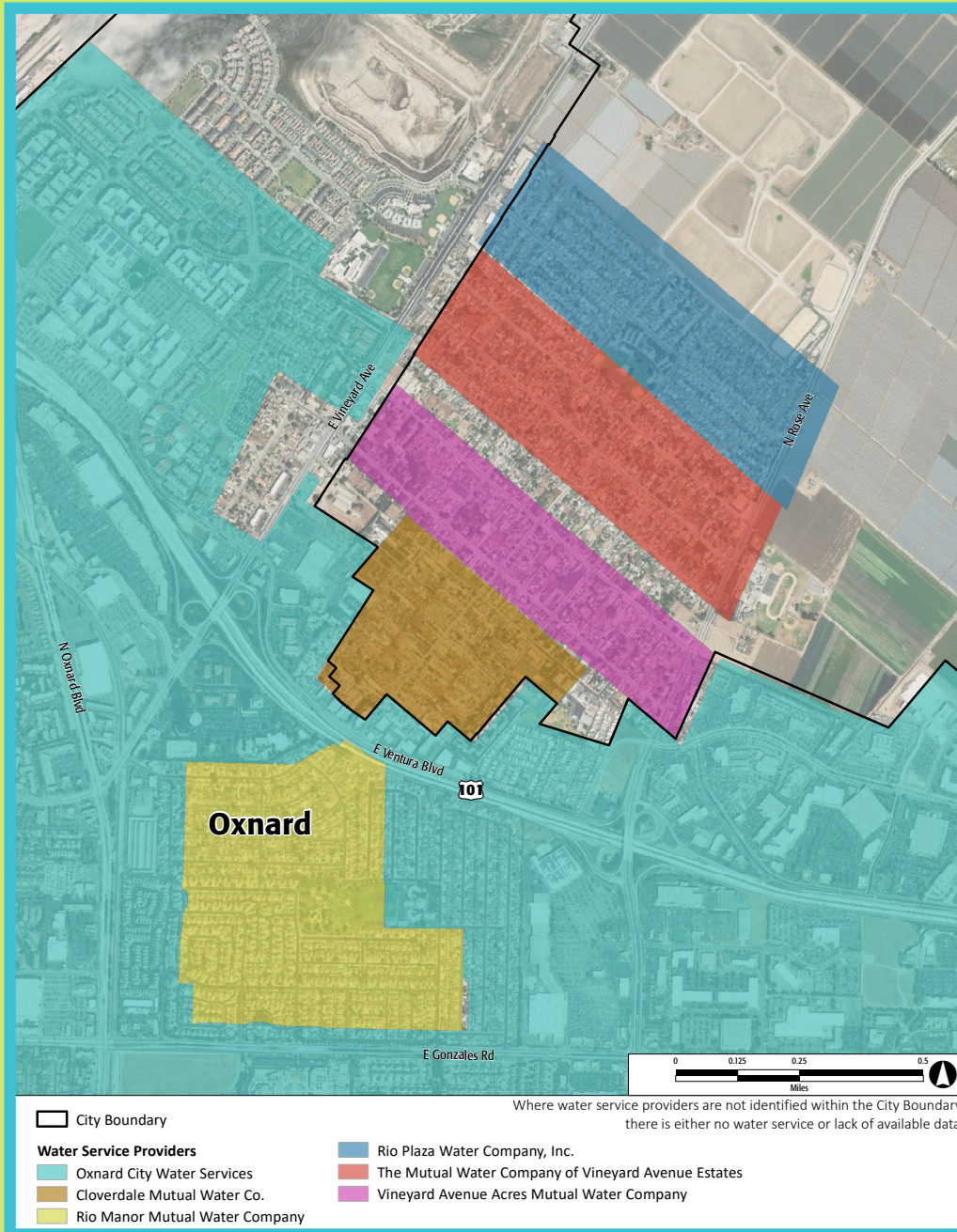
To learn more about water quality and tenant rights in your community, please visit: [watertalks.csusb.edu](http://watertalks.csusb.edu)

# WATER SERVICE PROVIDERS

WHERE DOES MY TAP WATER COME FROM?

There are six water service providers that service our community. Service areas for each provider are shown below.

- Oxnard City Water Services
- Cloverdale Mutual Water Co.
- Rio Manor Mutual Water Co.
- Rio Plaza Water Co., Inc.
- The Mutual Water Co. Of Vineyard Avenue Estates
- Vineyard Avenue Acres Mutual Water Co.



Source: Ventura County Purveyors Data, 2003

# WATER SERVICE PROVIDERS

## HOW MUCH DOES MY WATER COST?

The table below identifies the primary water source that the Water Service Providers in your community provide to their customers, as well as the average monthly water cost for all households that they serve. In many cases, Water Service Providers serve customers including households outside of your community.

To learn more visit:



<https://www.epa.gov/sustainable-water-infrastructure/pricing-and-affordability-water-services> or <https://watertalks.csusb.edu/>




WATER SERVICE PROVIDERS			
	Primary Water Source	Total Households Served by Provider <sup>1</sup>	Avg. Cost per Month per Household for ~300 gallons/day. <sup>2</sup>
Oxnard City Water Services	SWP and Wells	57,164	\$54.67
Cloverdale Mutual Water Co.	Wells	99	\$82.33
Rio Manor Mutual Water Co.	Wells	212	\$38.15
Rio Plaza Water Co. Inc	Wells	366	\$41.44
The Mutual Water Co. of Vineyard Ave. Estates	Wells	356	\$48.40
Vineyard Ave. Acres Mutual Water Co.	Wells	274	\$28.32

Source: Ventura County Purveyors Data, 2003; United Water Conservation District, 2019; Casitas Municipal Water District, 2019; American Community Survey 2013-2017, 2018, State Water Resources Control Board, 2019; CSU WRPI, 2019. ; LA-VEN DACIP/Water Talks Street Weighted DAC Model, 2019

### Notes:

1. Values displayed above are estimates. Some values are from the LA-VEN DACIP/Water Talks Street Weighted DAC Model, 2019. For more information, please refer to the cited data sources and available documentation.
2. Water fees reflect the cost of daily system operation and maintenance and compliance with water quality regulations, as well as the cost of infrastructure construction, maintenance, repairs, rehabilitation, and replacement, or water purchases from third party suppliers. Each Water Service Provider sets fees that reflect their infrastructure and operations costs, and thus fees vary from one operator to another.



WHO IS MY  
WATER SERVICE  
PROVIDER?

## Have Questions?

Contact your local service provider or use the following link(s) to download a water quality report.

### Cloverade Mutual Water

Address: 2699 Cortez St.  
Oxnard, CA 93036  
Phone: (805) 278-1983  
Website: N/A

### Mutual Water Company of Vineyard Avenue Estates

Address: Rose Ave. at Corsicana Dr.  
Oxnard, CA 93036  
Phone: (805) 485-8449  
Website: N/A

### Oxnard City Water Services

Service Center Address: 214 South Hayes Ave. Oxnard, CA 93036  
Public Works Administration: 305 West 3rd Street, 3rd Floor, Oxnard, CA 93036  
Phone: (805) 485-8449  
Website: N/A

### Rio Manor MWC

Address: PO Box 6366  
Oxnard, CA 93031  
Phone: (805)278-9992 & (805) 482-2001  
Website: N/A

### Rio Plaza Water Co Inc

Address: 655 W. Broadway, Suite 1410  
San Diego, CA 92101  
Phone: (619)446-4768  
Website: N/A

### Vineyard Ave Acres Mutual Water Co.

Address: 2838 Friedrich Rd.  
Oxnard, CA 93036  
Phone: (805) 985-4974  
Website: N/A

# GLOSSARY OF TERMS & ACRONYMS

## DEFINITIONS

**Aquifer:** formation of porous rock, gravel or sand that holds an underground supply of water. Wells can be used to pump water from aquifers.

**Aqueduct:** channel or other constructed watercourse that is used to carry water from one place to another.

**Bay:** a waterbody that is surrounded by land on three sides, and is connected to an ocean, or lake.

**Bioretention:** a chemical and biological process that treats and removes contaminants from stormwater and urban runoff. Stormwater is collected into the bioretention areas, which are depressed landscaped areas that slow and treat on-site stormwater runoff through various physical, chemical and biological processes.

**Clean Water Act:** U.S. federal law, passed in 1972, that regulates water quality standards and pollutant discharges.

**Contaminants:** a harmful or damaging substance.

**Constituent:** mineral or chemical present in water.

**Drainage:** the relative process by which water flows and moves through a soil's profile.

**Drought:** a period of low rainfall.

**Dry Weather Run-Off:** the process by which human activities such as car washing, landscape irrigation or street washing indirectly cause contaminants to enter our stormwater system.

**Estuary:** a water body where fresh water from rivers mixes with tidal saltwater.

**Exceedance:** a measurement that determines if a concentration of a contaminant is above the established safe threshold and/or a threat to human health.

**Infiltration:** the process through which water drains and leaches into the earth.

**Inlet:** an indentation along the coastline, such as a bay, cove, or estuary.

**Impervious:** not allowing water to flow through or within the surfaces.

**Greywater:** domestic wastewater generated by households or office buildings, which can be reused for non-potable uses. Sources of greywater include sinks, showers, baths, dishwashers or washing machines.

**Groundwater:** surface water that has drained into the ground. This water is stored in underground spaces called aquifers.

**Green Infrastructure:** a sustainable water management approach that uses biological processes to provide flood protection, clean air, clean water, and diverse habitats.

**Flood Management:** methods and practices developed to reduce flood risk to the built environment, provide emergency preparedness and response, forecast river levels based on weather conditions, improve water quality and supply reliability, and enhance public safety.

**Non-Point Source Pollution:** pollution caused indirectly by rainfall or snowmelt that collects various contaminants as it flows through the built environment.

**Outlet:** an area where water flows into a larger water body.

**Pervious:** areas or materials which water can pass through.

**Point Source Pollution:** pollution caused directly by a specific and very localized source, such as a leaking fuel tank or pipe.

**Potable:** water that is safe to drink.

**Watershed:** land area that channels rainfall and snowmelt into creeks, streams, and rivers that flow into a common outlet such as a reservoir, bay or the ocean.

**Water Conservation:** the protection and preservation of water resources.

**Water Meter:** a device that measures the amount of water used.

**Water Recycling:** process that reuses treated wastewater as a water resource.

**Wastewater treatment:** a process that removes contaminants from wastewater or sewage and transforms it into an effluent that can be returned to our water cycle.

**Water Quality:** the condition and measure of water relative to human health based on biological, chemical and physical parameters.

**Rainwater:** water that is collected from rain.

**Reservoir:** a large body of water that stores and holds water. Often created by dams.

**Urban Runoff:** water that flows through and within the urban environment and collects various contaminants such as motor oil, grease, pesticides, toxins and more.

**Stormwater Management:** strategies to reduce pollution and improve water quality.

**Surface Water:** water that flows within and over the surfaces of the built environment.

---

## **ACRONYMS**

**EPA** – US Environmental Protection Agency

**FEMA** – Federal Emergency Management Agency

**GLAC** – Greater Los Angeles County

**IRWM** – Integrated Regional Water Management Planning Act

**Measure W** – Safe Clean Water Parcel Tax (LA County)

**MHI** - Median Household Income

**Prop 1** – Proposition 1, Water Quality, Supply & Infrastructure Improvement Act

**SWP** – State Water Project

**SWRCB** – State Water Resources Control Board

**USCR** – Upper Santa Clara River

**VCWPD**- Ventura County Watershed Protection District

**WCVC** – Watershed Coalition of Ventura County

**WRPI** – California State University’s Water Resources and Policies Initiative



**For additional 'Common Watershed Protection and Stormwater Pollution Prevention Terms, please visit:** <http://www.cleanwatershed.org/glossary/>